



Regenerating Land, Empowering Veterans

NRCS Support for Beginning Veteran Farmers

Thomas Kielbasa, NRCS-Maine Public Affairs

FARM PRODUCTION AND CONSERVATION
FSA | NRCS | RMA | Business Center

Why is this important?

- Financial Assistance for Veterans
- Protect and increase land productivity





United States Department of Agriculture

Natural Resources Conservation Service









Natural Resources Conservation Service (NRCS)

Financial and **Technical** Assistance to landowners and partners to address natural resource conservation issues.



The screenshot shows the Farmers.gov website with the 'Conservation' menu item selected. The page features a grid of six topic cards: Soil Health, Climate-Smart Agriculture & Forestry, Easements and Reserves, Nutrient Management, Water Quality, and another Water Quantity card. A 'Featured' section on the right highlights the 'Conservation Concerns Tool' with an image of a butterfly on a sunflower and a link to a 'Conservation at Work Video Series'.

USDA Farmers.gov
U.S. DEPARTMENT OF AGRICULTURE

LOCAL DASHBOARD BLOG DATA USDA.GOV LOG IN | SIGN UP

Home Loans Working With Us Protection and Recovery Conservation Your Business

Search Farmers.gov

Conservation

[VIEW ALL IN CONSERVATION](#)

Soil Health
Principles of soil health and best practices to work with the land, not against it.

Climate-Smart Agriculture & Forestry
Producers and landowners play a critical role in climate change mitigation.

Easements and Reserves
Learn about easements and reserves and how they benefit different types of land.


Nutrient Management
Efficiently managing nutrients maximizes yields and protects the environment.

Water Quality
How to improve water quality on your land through practices and initiatives.

Water Quantity
How to manage water quantity on your land through practices and initiatives.

[VIEW ALL IN CONSERVATION](#)

Featured



Conservation Concerns Tool

Learn about conservation issues that might impact the productivity of your working land.

- [Conservation at Work Video Series](#)

Funding Programs

Soil



Environmental Quality Incentives Program (EQIP) offers financial and technical assistance to eligible producers to help install or implement conservation practices on eligible agricultural land.

Water



Agricultural Management Assistance (AMA) helps agricultural producers manage financial risk through diversification, marketing or natural resource conservation practices.

Air



Regional Conservation Partnership Program (RCPP) is merit-based and targets specific vulnerable areas and is administered through partnership agreements and through program contracts or easement agreements.

Plants



Conservation Stewardship Program (CSP/CStP) helps agricultural producers maintain and improve their existing conservation systems and adopt additional conservation activities to address priority resource concerns.

Animals



Agricultural Conservation Easement Program (ACEP) provides financial and technical assistance to help conserve agricultural lands and wetlands and their related benefits.

Types of NRCS Technical Assistance

Farm/Site Consultations

- Site Assessments
- Resource Inventory

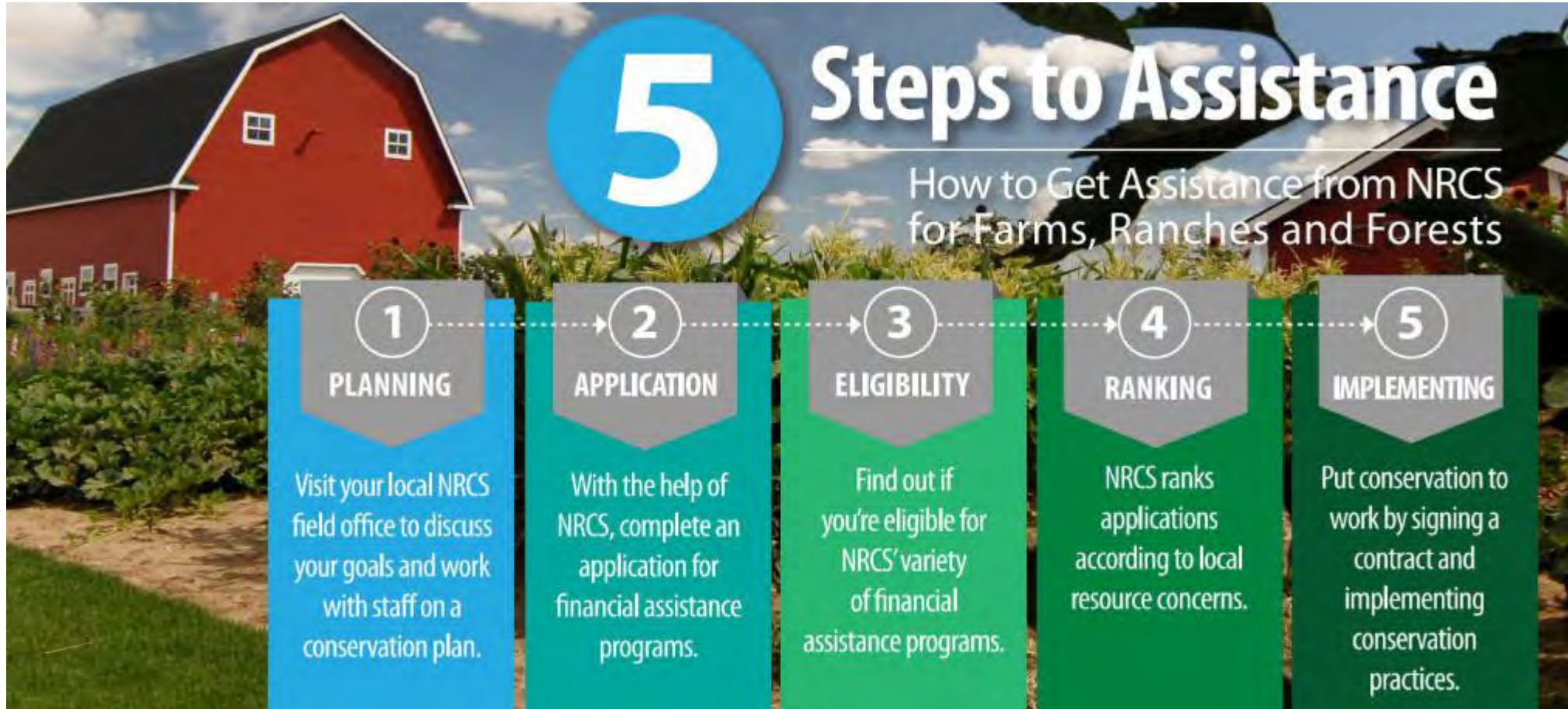
Conservation Planning

- Resource Assessment
- Resource Monitoring
- Conservation Plan Development

Conservation Planning Assistance

- Water Level Monitoring
- Site Visit
- Site Survey
- Conceptual Designs
- Design Review
- Project Layout
- Construction Inspection
- Project Certification





Regenerative Agriculture

“Conservation management approach emphasizing natural resources through improved soil health, water management, and natural vitality for the productivity and prosperity of American agriculture and communities.”





Farmers and ranchers interested in regenerative agriculture are encouraged to apply through their local NRCS Service Center.



**SCAN THE QR CODE
FOR MORE INFO.**



Primary Practices

- Conservation Crop Rotation
- Contour Farming
- Contour Orchard and Other Perennial Crop
- Cover Crop
- Drainage Water Management
- Forest Harvest Management
- Forest Stand Improvement
- Irrigation Water Management
- Mulching
- Nutrient Management
- Pest Management Conservation System
- Grazing Management
- Residue and Tillage Management, Not Till
- Residue and Tillage Management, Reduced
- Stripcropping



Cover Crop



- Reduce erosion
- Maintain or increase soil organic matter
- Improve soil aggregate stability
- Improve habitat for soil organisms
- Reduce water quality degradation
- Reduce weed and plant pest pressure
- Improve moisture management
- Reduce soil compaction
- Supply nitrogen to the subsequent crop



Forest Stand Improvement



- Improve forest health/productivity
- Improve forest structure/composition
- Wildlife, fish and pollinator habitat
- Manage natural precipitation
- Reduce forest pest pressure
- Reduce forest wildfire hazard



SCAN THE QR CODE
FOR MORE INFO.



Conservation — AT WORK —



Terrace



🕒 1 minute

Terraces are an earth embankment or a combination of a ridge and channel, constructed across the field slope.

Subsurface Irrigation



🕒 1 minute

Subsurface irrigation delivers irrigation water directly to the crop root zone and maintains soil moisture for optimum plant growth by subsurface means.

Residue Management



🕒 1 minute

Residue Management limits soil disturbance to manage the amount, orientation and distribution of crop and plant residue on the soil surface year around.

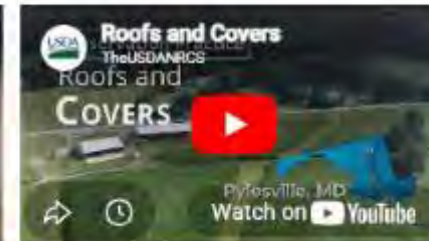
Alternate Wetting-Drying Rice



🕒 1 minute

When alternate wetting and drying rice fields is implemented rice fields are drained and allowed to "dry down" to a saturated soil condition prior to reflooding the field.

Roofs and Covers



🕒 1 minute

Roofs and covers are a manufactured membrane, composite material, or roof structure placed over a waste management facility, agrichemical handling facility, or on-farm secondary containment facility.

Waste Separation Facility



🕒 1 minute

Waste separation facilities are a filtration or screening device, settling tank, settling basin, or settling channel used to partition solids and/or nutrients from a waste stream.



USDA is an Equal Opportunity Provider, Employer, and Lender